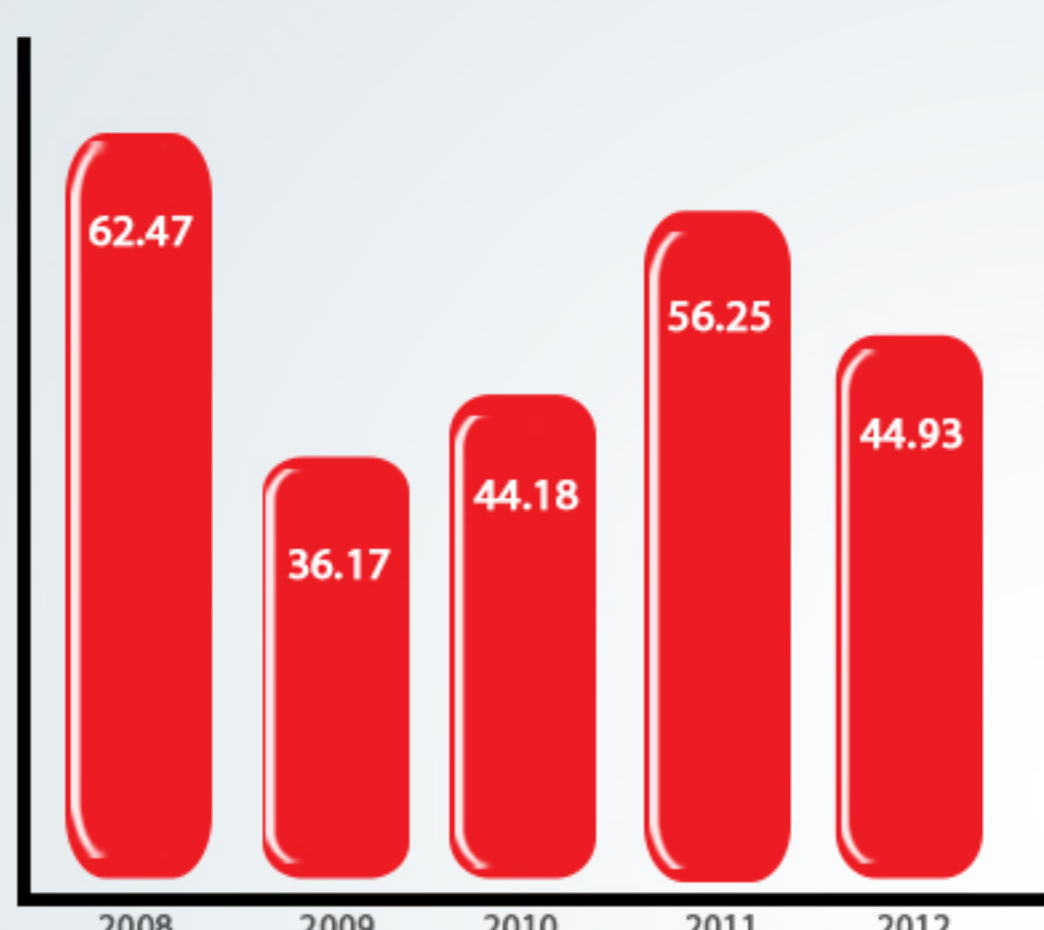


Pests can penetrate the food supply chain from numerous entry points during the food processing cycle. Prevent potential food safety incidents with the implementation of IPM programme.

### FOOD POISONING STATISTICS AND FACTS

Food Poisoning Trends in Malaysia 2008-2012 (incidence rate per 100,000 population)<sup>(1-5)</sup>



A total of **9,777** cases in 397 food poisoning episodes were reported nationwide in Malaysia from January to September 2013<sup>(12)</sup>

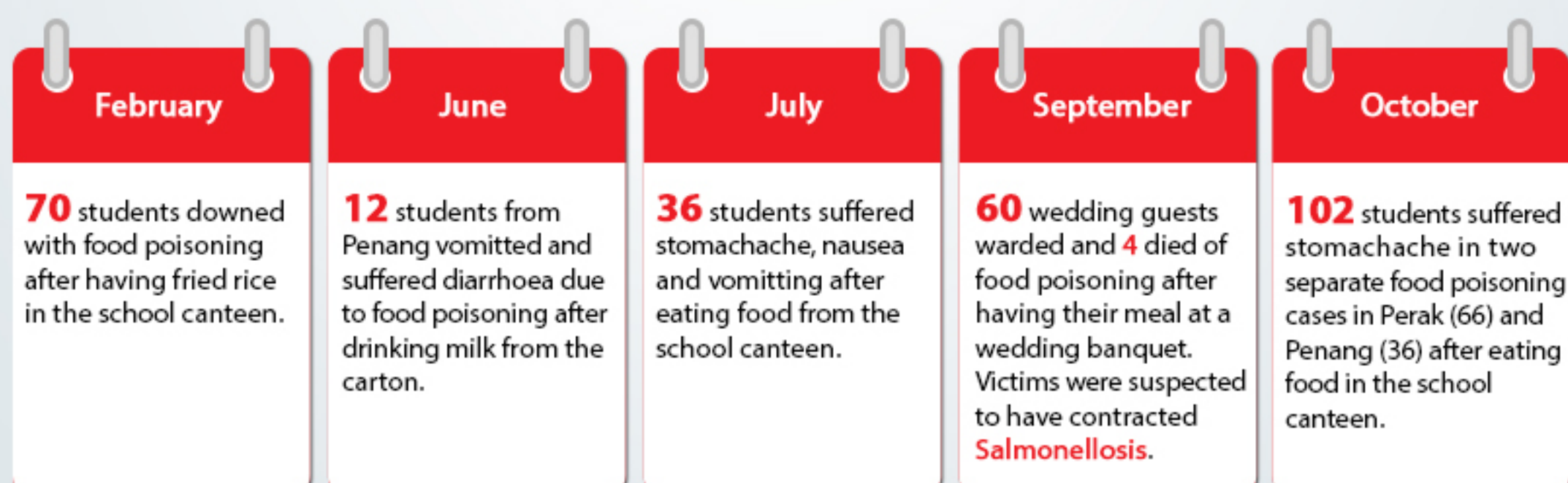


**Salmonella** bacteria is one of the most common causes in food poisoning worldwide<sup>(13)</sup>



**9** out of **10** food poisoning deaths occurred among people over the age of **20**<sup>(14)</sup>

### 2013 Food Poisoning Cases in Malaysia<sup>(6-11)</sup>



### HOW PEST INFESTATION AFFECTS YOUR BUSINESS?

Pests carry harmful bacteria that spreads infectious diseases



Pest problem can also impact your business in many other ways



### RENTOKIL INTEGRATED PEST MANAGEMENT (IPM) AND ONLINE REPORTING TOOL FOR FOOD QUALITY CONTROL

Partnership with pest experts who understand your trades would be able to provide you effective pest management strategies that are tailored to your business needs.



The Benefits of IPM and Online Monitoring Tool



**Holistic and proactive approach** using a combination of chemical and non-chemical solutions to reduce heavy reliance on pesticides to treat pest issues.



Pest can infiltrate from any point in the entire supply chain. Proper monitoring system from farm to table provides ample time for pest activities to be detected before it reaches the consumers.

Our online reporting system allows better traceability and easy access to all key information needed for your supply chain risk management



#### Key Features:

- Recommendation Management
- Multisite Capability
- Pest Trend and History Activity
- Safe and Secure Online Storage
- Real Time Reporting
- Audit Compliance