

The presence of SPI can cause enormous economic losses to your business by damaging and contaminating food material.

SPI Infestation Across Food Supply Chain



Raw Materials

RM184.9 Bil of crops production destroyed annually due to pest infestation in Asia.⁽¹⁾



Food Processing & Manufacturing

Larva webbing can cause **blockages and damage to production machinery**



Warehouse / Distribution

Estimated **1 quarter of the world's stored grain crop** is lost annually due to SPI attack.⁽³⁾



Packaging

SPI larva can penetrate through **cracks as small as 0.12 mm.**⁽²⁾



Logistic & Export

Stock may spill and deteriorate during transportation, making stock susceptible to SPI infestation.



Food & Beverage

SPI can hide between cracks in the store walls, **reinfesting fresh supply of stocks.**



Consumer

SPI encourages the growth of microtoxin which can be **toxic for human consumption.**

Did you know?



Birds are also a **risk to your supply chain management** by carrying and spreading insects and mites into your food processing facility.

Common Species of SPI in Malaysia



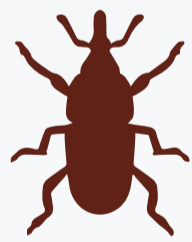
Cigarette Beetle

Feeds off tobacco, dry stored food products, spices, seeds, grains and dried plant material.



Flour Beetle

Feeds on durable commodities such as nuts, spices and coffee beans.



Rice Weevil

Grows, feeds and pupates within a grain kernel.



Sawtoothed Grain Beetle

Feeds on grains, cereals, dried fruit and nuts.

Rentokil Integrated Pest Management (IPM) for SPI Control



SPI can infiltrate at any stage of food supply chain, resulting negative impact to your business with loss of commodity and revenue. At Rentokil, we apply IPM by **ensuring effective control against SPI infestation from farm to table.**



With the application of **myRentokil online reporting as part of IPM**, it provides you **better traceability and easy access to all key information** needed for your end-to-end food supply chain management.